

Wright, Patricia. "Conversation in Sculpture," Daily Hampshire Gazette, Northampton, MA, November 18, 1993.

Conversation in sculpture shows complementary styles

TALK about touchy, talk about feely: when it comes to humble and expressive surfaces, clay and papier-mache take the sculptural cake.

What better materials, therefore, for "A Domestic Conversation," recent figural work on homely themes by Northampton sculptors Linda Batchelor and Harriet Diamond.

Currently filing both galleries at the Northampton Center for the Arts, "conversation" is an intermingling throughout of the companionable work of these colleagues and friends. Both their subjects and their styles are complementary. But you're not likely to confuse one artist with the other.

Patricia
Wright

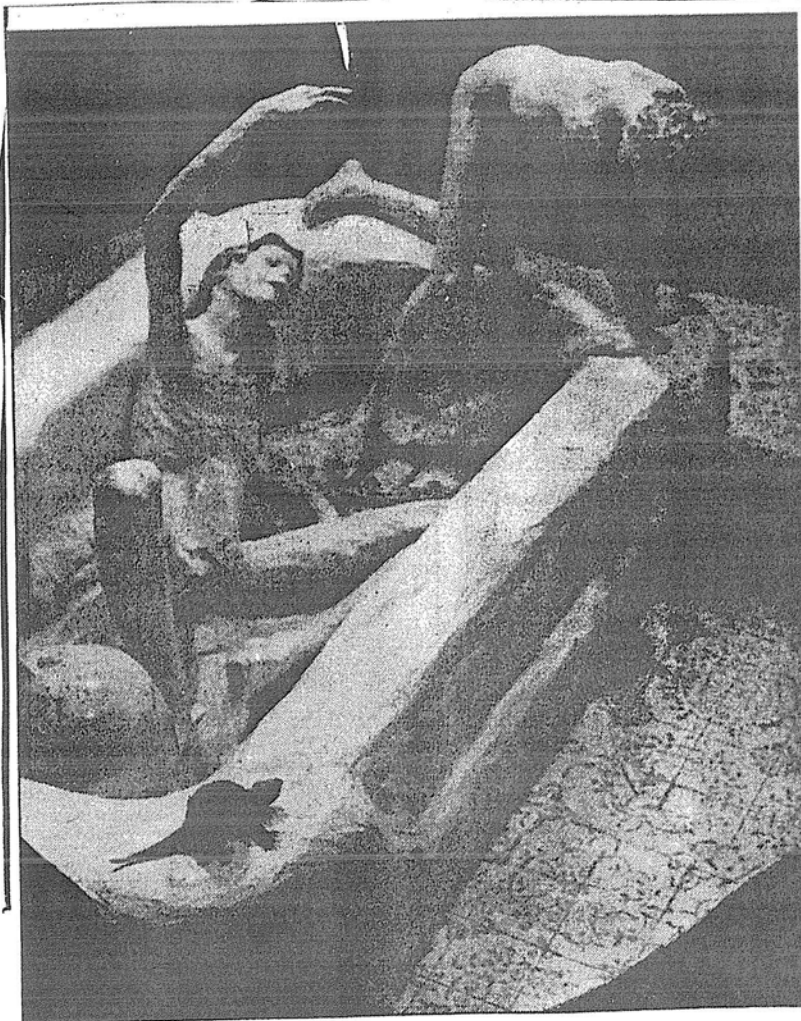


Art Views

For one thing, Diamond's papier-mache figures are nearly life-size, and they stand, lean, or sprawl in full, if floppy, round.

A few of Batchelor's small clay sculptures are free-standing, but most are wall-hung reliefs.

Then too, Diamond's style is one of lumpish and endearing realism: an elderly woman with sloping shoulders and washboard chest; a couple of boys whose bodies are a mixture of lizard and pup.



Northampton artist Harriet Diamond created her "Sm World" out of chicken wire and papier-mache.